

GAEP *Informant*

February 2017

[View this email in your browser](#)

News, Events, and Announcements from the Georgia
Association of Environmental Professionals



GEORGIA ASSOCIATION OF ENVIRONMENTAL PROFESSIONALS

Is it time to renew your GAEP membership?

Renew your membership at <https://www.gaep.info/contact/>

or

Contact Membership Director, Betsy Jorgensen

Elizabeth.Jorgensen@ch2m.com

UPCOMING EVENTS

[Click Here to RSVP for the Upcoming Lunch 'n' Learn Event](#)

Professionals Lunch and Learn:

*"Georgia's Air Quality-- How It's Regulated and Where We Stand Today
With Special Guest Speaker:*

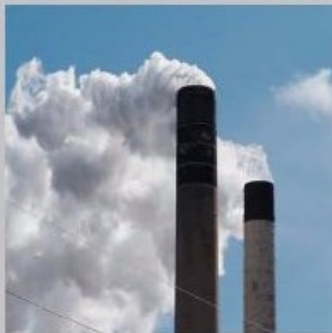
Bert Pearce

GAEPD Air Monitoring Unit

Bert Pearce has been an environmental engineer with Georgia EPD's Air Protection Branch since 2004. He currently develops rules and state implementation plans (SIPs) to help Georgia achieve national ambient air quality standards (particulate matter, ozone, and regional haze). Bert previously wrote air quality operating permits for Georgia industrial facilities. Prior to EPD, Bert worked in industrial environmental compliance and in environmental consulting. He holds a BS in Electrical Engineering from Clemson University and an MS in Environmental Engineering from Georgia Tech and is a registered professional engineer in Georgia.

Location:

Analytical Environmental Services
3080 Presidential Drive
Atlanta, GA 30340



Date and Time:

Thursday, February 9th
12:00 p.m. - 1:00 p.m.

Be sure to check out our brand new website and RSVP at:

www.gaep.info

You can also RSVP by emailing William Barnett or Tyrel Heckendorf at:
wbarnett@pine-environmental.com ; heckendorf@aesatlanta.com

Lunch will be provided
Event is \$10.00 for GAEP members and \$20.00 for non-members



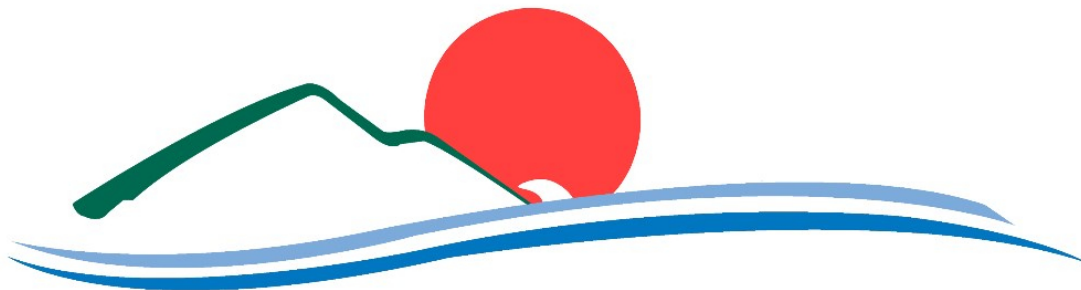
GEORGIA ASSOCIATION OF
ENVIRONMENTAL PROFESSIONALS



The 7th Annual ITE/ASHE Transportation Winter Workshop will take place February 26-27, 2017 in Columbus, Georgia!→

A joint conference held by Georgia ITE and the Georgia chapter of ASHE, Transportation Winter Workshop is a 1 ½ day event held each February. Containing technical sessions, group projects, networking, and social events, the conference is packed full of opportunities to gain technical knowledge and meet other transportation professionals!

For a Draft Workshop Schedule and Registration Information. [CLICK HERE](#)



2017 NAEP CONFERENCE DURHAM, NORTH CAROLINA

The 2017 NAEP Annual Conference will be held in the Durham Convention Center in Durham, North Carolina, March 27 - 30, 2017!

NAEP is pleased to announce that registration rates have not been increased this year. Please note that there are added savings if you are a speaker or a government employee.

Excellent training sessions are being offered on Monday, March 27. Four concurrent oral sessions in each of the time frames will be supplemented by off-

Assessment Management Park, and a Duke Forest Tour.

See the [Schedule at a Glance](#) for the day-by-day outline of concurrent sessions and tracks.

[Click HERE to Register Online Today!](#)

[Download a PDF Registration Form HERE.](#)

[For information on Sponsor and Exhibit Opportunities please CLICK HERE.](#)

Planning to attend the NAEP National Conference this year? If so, please let us know.

Contact NAEP Chapter Representative, Marie Njie

Marie.Njie@R2Tinc.com

Do you have suggestions for GAEP Social Events or Lunch 'n' Learn topics? Please email the Co-Directors of Social Events Tyrel Heckendorf heckendorf@aesatlanta.com or William Barnett wbarnett@pine-environmental.com to share your ideas!

EMPLOYMENT OPPORTUNITIES

University of Kentucky - Lexington, KY

Ph.D in Travel Forecasting and Data Science

Dr. Erhardt is currently recruiting one or more talented individuals for a funded PhD in travel forecasting and data science, starting in Fall 2017. Specific areas of interest include:

- Evaluating and improving travel forecast accuracy.
- Using passively collected "Big Data" to measure transportation project impacts and model performance.
- Advancing reproducibility and interchangeability in regional and statewide transportation models.

Qualified individuals may have a background in civil engineering, geography, urban science or a related field. They will bring competence in software development or data visualization and a passion for transportation problems.

The Transportation Engineering and Data Science lab (<http://transportlab.net/>) is a part of an active and growing transportation group in the Department of Civil Engineering at the University of Kentucky. We work in close collaboration with the Kentucky Transportation Center, which serves as the research arm of the state Transportation Cabinet.

We are located in beautiful Lexington, Kentucky, a vibrant small city with the nation's first urban growth

Please email me at greg.erhardt@uky.edu to express interest or with any questions.

Gregory D. Erhardt, PhD, PE
Assistant Professor
Department of Civil Engineering, University of Kentucky

Regulatory Changes/Updates

Revised/Renewed USACE Nationwide Permit's (NWP's)

Summary of the 2017 Nationwide Permits

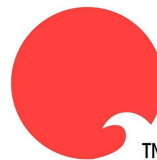
The Clean Water Act 404 Program and the New Administration

New USACE Jurisdictional Determination Form - Savannah District

UPCOMING TRAINING OPPORTUNITIES



American Public University



NAEP

The National Association of
Environmental Professionals

TM *Promoting Excellence in the Environmental Profession*

2017 APU & NAEP Webinar Series

Join us for our sixth exciting year of interactive webcasts with our environmental industry experts brought to you by American Public University and the National Association of Environmental Professionals (NAEP). National Association of Environmental Professionals (NAEP) and American Public University (APU) have shared efforts through an educational alliance with the goal to help prepare environmental professionals to advance in their field through career-relevant education. With this goal in mind, NAEP and American Public University leaders are collaborating on a sixth year of webcast series focused on career preparation and professional development for environmental professionals.

The first webinar in this three part series will be held on Wednesday, February 8, 2017 at 2pm ET. NAEP and APU 3 Part Webinar Series - To register and for more information please visit <https://naep2017.splashthat.com/>

Wednesday, February 8, 2017

2:00 - 3:15 PM [ET]

Part 1: Transitioning to the Professional World: What you Don't Learn in the Academic Classroom

To register please visit <https://naep2017-1.splashthat.com/>

This webinar will focus on dynamics in the office for environmental professionals. A difference in work culture exists from what you experienced in the academic classroom and in other fields compared to the professional work environment. Navigating the work environment is a skill one develops over time and with experience. This skill set includes having the right attitude and being ready to receive advice. While the topics may include the benefits of completing internships and the larger concepts of a work ethic, the webinar will be broken down into work sectors (e.g., private, government, non-governmental organizations [NGOs]).

Speakers:

- Ron Deverman - Associate Vice President at HNTB and NAEP Past President
- John Esson - Founder and Director of the Environmental Career Center
- Daniel Reed - Environmental Affairs Specialist at BAE Systems, Inc.
- Shannon Stewart - Senior Advisor to the Director of the Bureau of Land Management and NAEP Elected Board Member

For speaker bios and more information please visit <https://naep2017-1.splashthat.com/>

To register please visit <https://naep2017-1.splashthat.com/>

Wednesday, September 13, 2017

2:00 - 3:15 PM [ET]

Part 2: Technology Tools in the Environmental Field

This webinar will introduce the audience to tools, equipment, and software that they may see in the field or in the office. The webinar will cover data mining of existing data sources, impact analysis applications, and relate training opportunities. Some possible tools include geographic information systems (GIS), data analysis, and government databases.

Speakers: Heidi Heartmann, Lee Walston, Yuki Hamada, Marie Campbell

Wednesday, November 15

2:00 - 3:15 PM [ET]

Part 3: Career Development: Getting in the Door and Being Present

This webinar will offer a mix of topics from interview skills to resumes building and updating to broadening your connections and maintaining a social media presence, as well as other means of networking. The topics are relevant not only to the rising professional but to the mid-career professional already working in the field. Some topics include being available to others through mentoring, active involvement in volunteer opportunities, enriched community experiences, and participating in conferences and training sessions. One further consideration is managing your own expectations for your career and being proactive in getting there.

Speakers: John Esson, Leslie Tice, Charlie Venuto, Elizabeth D'Andrea

ATTENTION MEMBERS: WE HAVE SWITCHED OUR NEWSLETTER DISTRIBUTION FORMAT TO MAILCHIMP. PLEASE BE SURE TO CHECK YOUR JUNK MAIL FOLDER OVER THE NEXT SEVERAL WEEKS TO ENSURE YOU ARE GETTING OUR

[Subscribe](#)

[Past Issues](#)

[Translate ▼](#)

Copyright © 2017 GAEP All rights reserved.

Want to change how you receive these emails?
You can [update your preferences](#) or [unsubscribe from this list](#)

This email was sent to <<Email Address>>

[why did I get this?](#) [unsubscribe from this list](#) [update subscription preferences](#)

Betsy Jorgensen / GAEP · 6600 Peachtree Dunwoody Road · Building 400, Suite 600 · Atlanta, Ga 30328 · USA

The MailChimp logo is displayed in a white, cursive font within a dark gray rounded rectangular box.

MailChimp